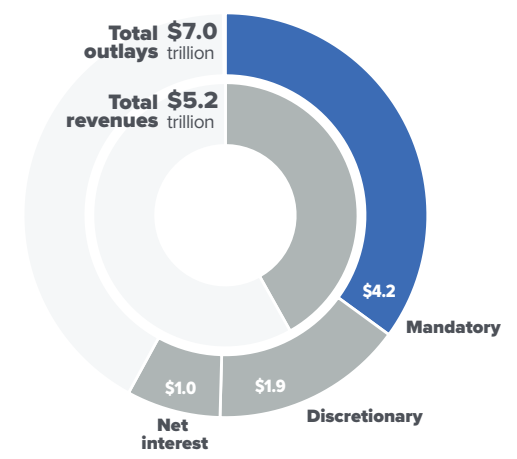


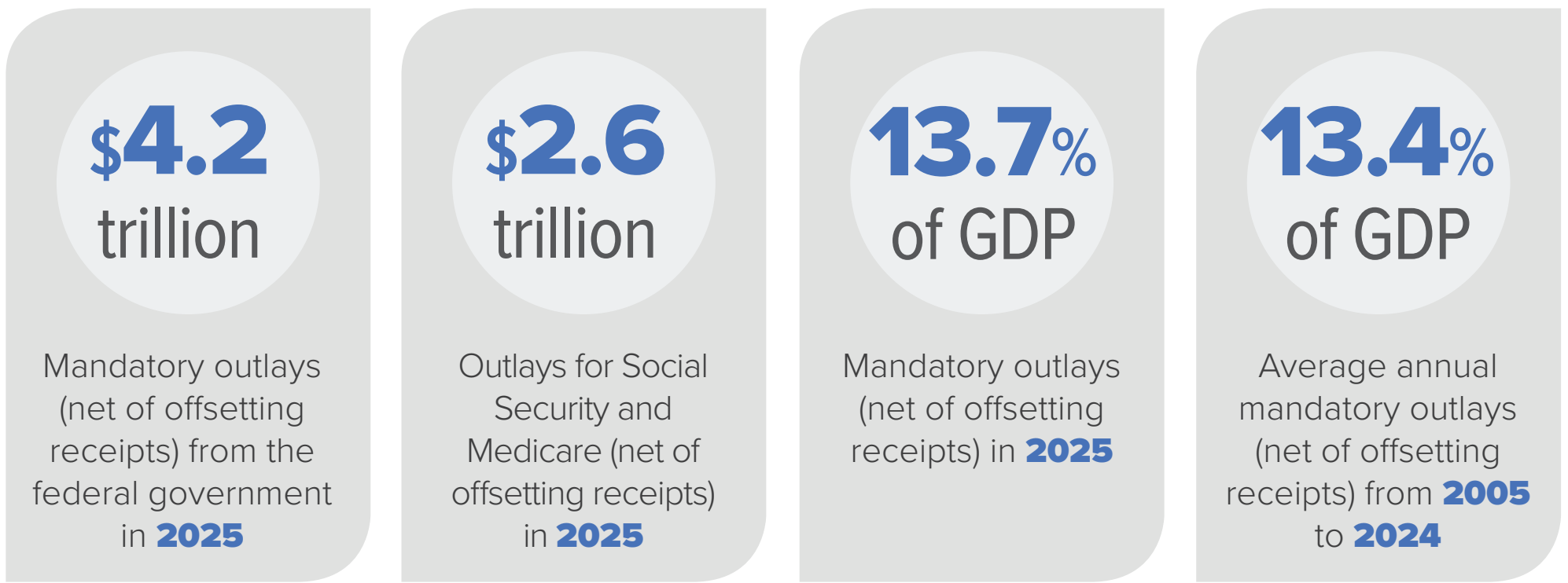
THE FEDERAL BUDGET IN FISCAL YEAR 2025



A Closer Look at **Mandatory** Spending

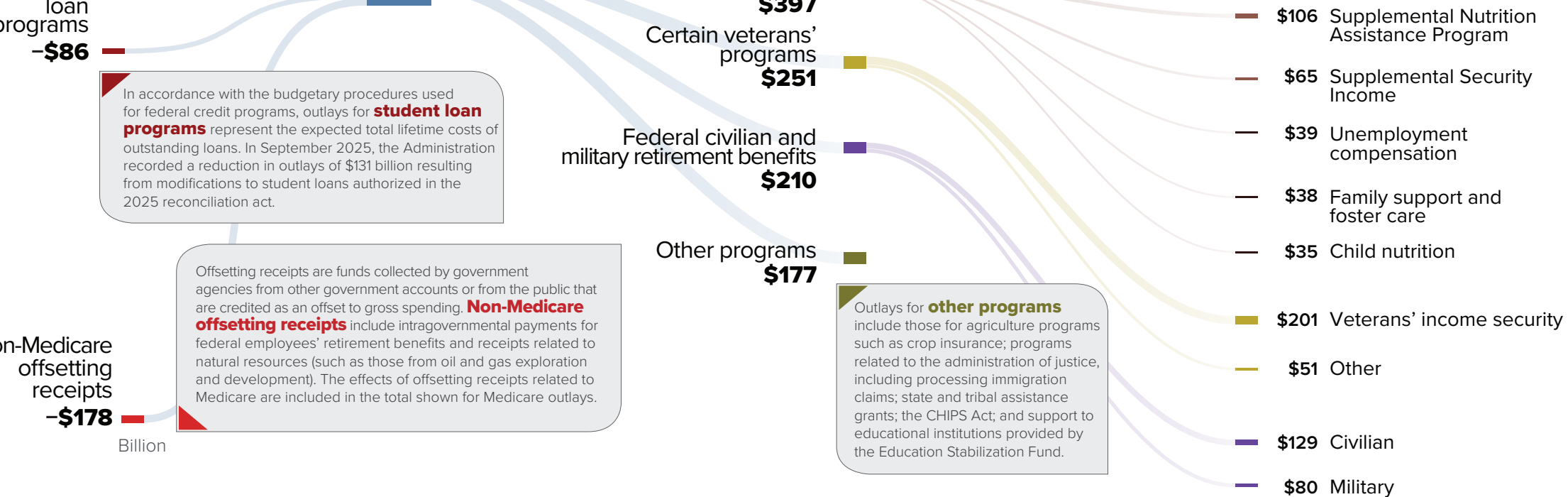
Primarily payments for benefit programs whose eligibility rules and benefit formulas are set by law

At a Glance



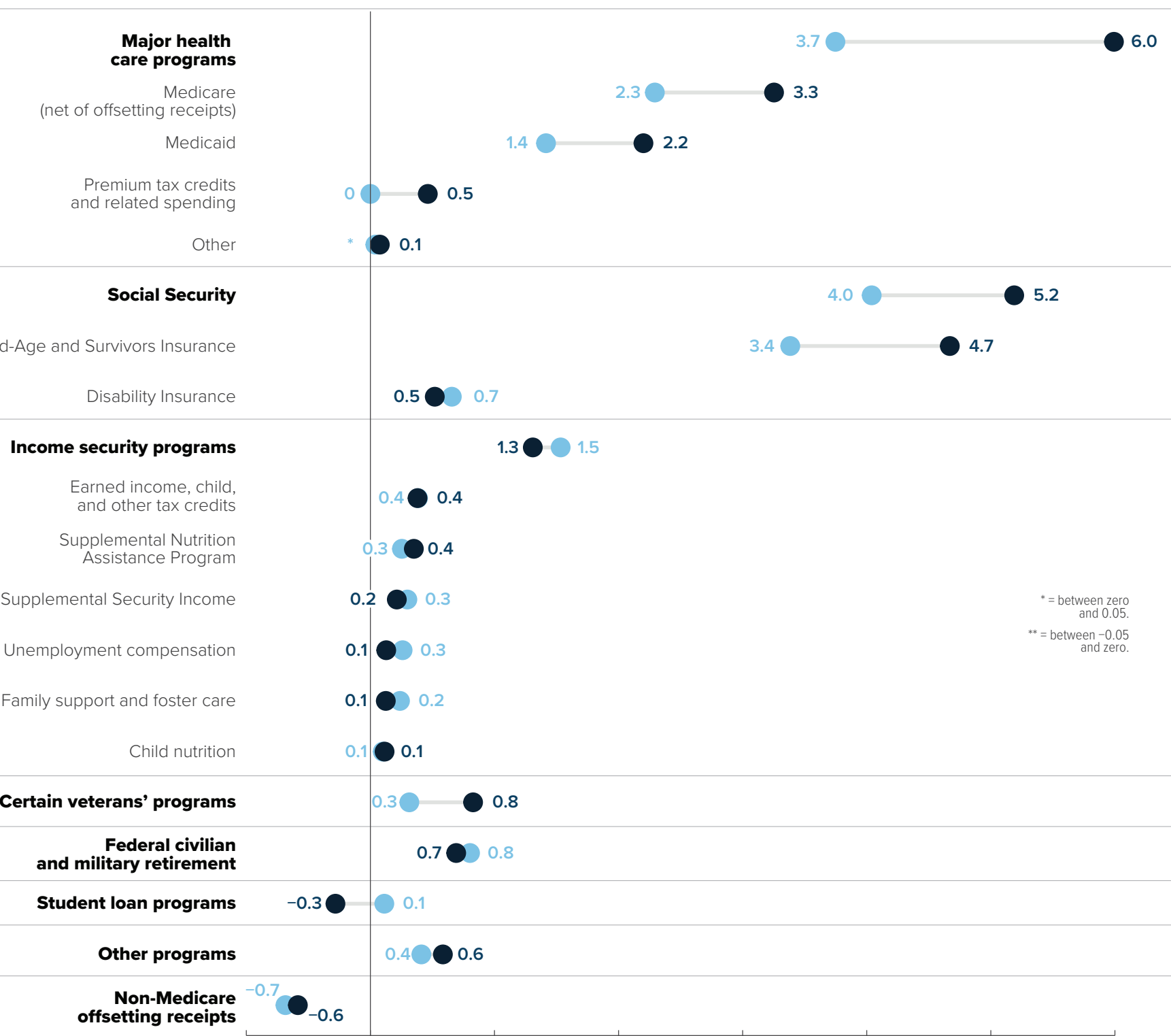
Mandatory Outlays

\$4.2 trillion



Mandatory Outlays in 2005 and 2025

Percentage of GDP



Change (percentage points)

